

**SHERWIN
WILLIAMS®**

FASTOP™ MULTI SYSTEMS

POLYURETHANE HYGIENIC FLOORING



DESIGNED TO PERFORM

[sherwin-williams.com/protective](https://www.sherwin-williams.com/protective)



FASTOP™ MULTI SYSTEMS

POLYURETHANE HYGIENIC FLOORING

The proven Sherwin-Williams FasTop formulation has been tried and tested for over 20 years by some of the world's largest organizations. These systems provide hygienic, chemical-resistant and slip-resistant flooring solutions that are extremely hard wearing, making FasTop the ideal choice for the most demanding environments.

BENEFITS

- Slip resistant
- High chemical resistance
- Resistant to hot water and steam cleaning
- Self-sealing
- Matte finish
- Extremely hard wearing
- Excellent flow and leveling

SCOPE OF USE

- Food manufacture and processing
- Chemical plants
- Medical and veterinary practices
- Brewing and distilling facilities
- Dairies
- Heavy duty plant and high-traffic areas
- Engineering environments



SYSTEM OVERVIEW

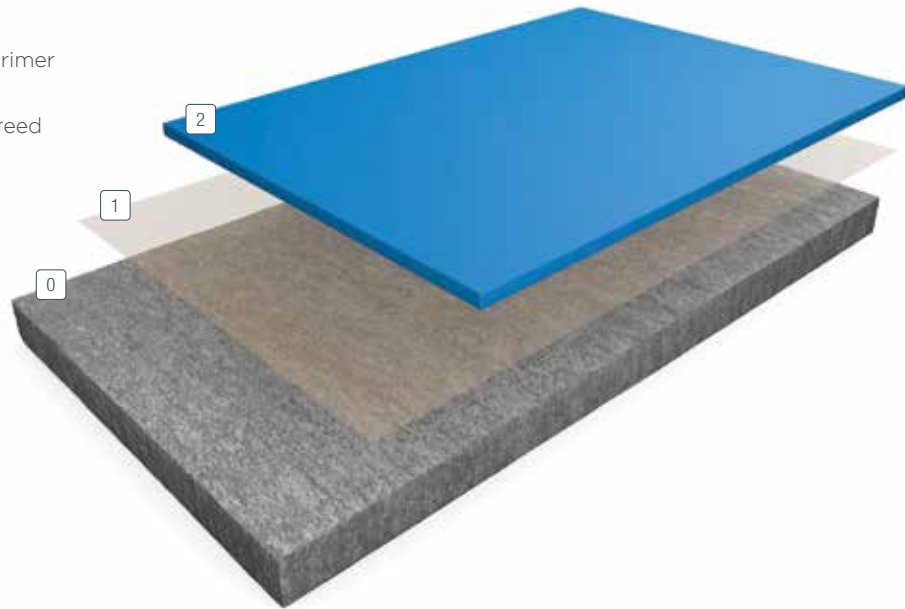
Product	FasTop Multi TG69	FasTop Multi RS69	FasTop Multi SL45	FasTop Multi SL23	FasTop Multi Cove Base	FasTop Multi T100
Description	Trowel-applied screed	Resin-rich screed that can be applied by rake and spike	Trowel/rake-applied self leveling	Trowel/rake applied self leveling	Coving material	4-Pack polyurethane coating
System thickness	1/4 - 3/8	1/4 - 3/8	1/4 - 3/8	1/8 - 3/16	1/8 - 1/4	15 - 40 mils
Pack size	5.0 kg + 55 lbs	5.0 kg + 44 lbs	5.0 kg + 37 lbs	5.0 kg + 27 lbs	2.0 kg + 22 lbs	5.0 kg + 11 lbs
VOC content	9 g/l	9 g/l	13 g/l	14 g/l	5 g/l	15 g/l
Cure time to light traffic	12-16 hrs	12-16 hrs	12-16 hrs	12-16 hrs	12-16 hrs	12-16 hrs
Cure time to designed traffic	48 hrs	48 hrs	48 hrs	48 hrs	48 hrs	48 hrs
Full cure (days)	5-7 days	5-7 days	5-7 days	5-7 days	5-7 days	5-7 days
Coverage rate	16 sq ft per unit at 1/4 inch 11 sqft per unit at 3/8 inch	21 sq ft per unit at 1/4 inch 16 sqft per unit at 3/8 inch	33 sq ft per unit at 1/4 inch 23 sqft per unit at 3/8 inch	32 sq ft per unit at 1/8 inch	15-20 L/F at 1/8 inch 6" in height	15 - 40 mils

FASTOP™ SL23/SL45

SELF-LEVELING FLOORING SYSTEMS

FasTop self-leveling flooring systems offer the flexibility of smooth or broadcast options for food and beverage production areas suitable for medium duty use with resistance to thermal shock, abrasion and chemical attack. The flat surfaces enhance ease of cleaning, and allow powders such as flour and sugar to be swept up while also providing slip-resistant properties. FasTop SL23 and FasTop SL45 deliver thicknesses from 1/8 to 3/8 inch and are often used for rapid return to service to avoid operation down time.

- ② **Slurry:**
FasTop Multi SL23/SL45
- ① **Primer (optional):**
GP3477 Water Emulsion Primer
- ① **Substrate:**
Concrete/cementitious screed



BENEFITS

- High-build finish
- 100% solids content, solvent free and low odor
- Hygienic and easily cleaned
- High-gloss finish with good color stability
- Excellent slip resistance with the inclusion of selected aggregates
- Excellent chemical resistance and resistant to hot water
- Return to service after 24 hours

SERVICE TEMPERATURES

FasTop SL23 at 1/8 inch = -50°F to 266°F

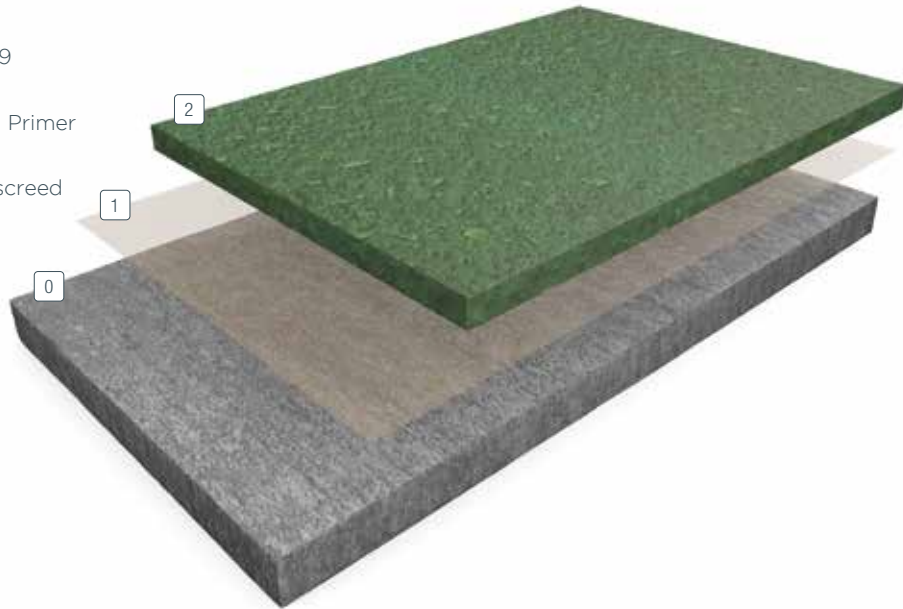
FasTop SL45 at 1/4 inch = -50°F to 266°F

FASTOP™ TG69/RS69

SCREED FLOORING SYSTEMS

FasTop screed flooring systems deliver a textured surface for food and beverage production areas suitable for very heavy duty use with resistance to thermal shock including steam, abrasion and chemical attack. The profiled surfaces are cleanable with normal food factory cleaning regimens while providing slip resistance in wet and dry situations. FasTop TG69 and FasTop RS69 deliver thicknesses from 1/4 to 3/8 inch for maximum performance.

- ② **Screed:**
FasTop Multi TG69/RS69
- ① **Primer:**
GP3477 Water Emulsion Primer
- ① **Substrate:**
Concrete/cementitious screed



BENEFITS

- Ease and speed of installation via rake and spike – RS69 version only
- High chemical resistance
- Resistant to hot water
- Resistant to steam at 9 mm depth
- Self sealing
- Excellent slip-resistant finish
- Hard wearing

SERVICE TEMPERATURES

FasTop TG69/RS69 4 inch = -50°F to 266°F

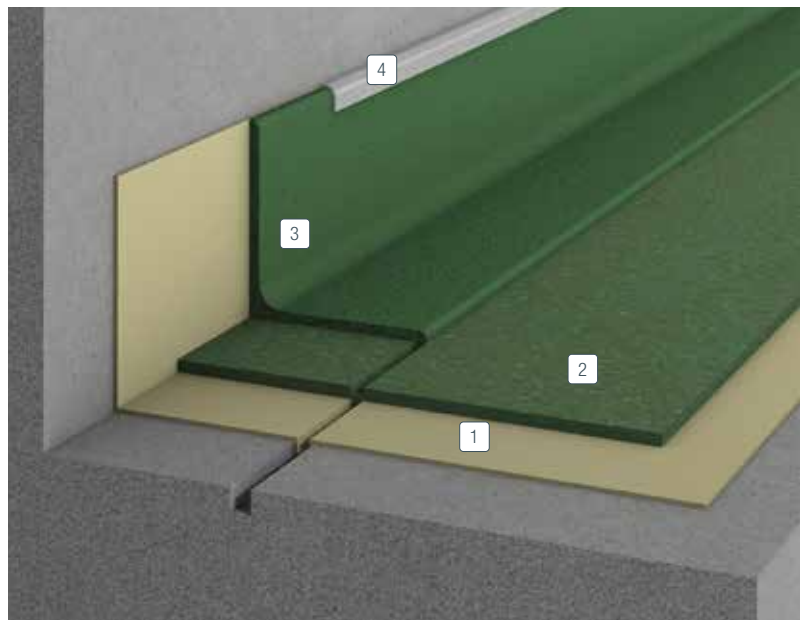
FasTop TG69/RS69 3/8 inch = -50°F to 266°F

FASTOP™ COVE BASE SYSTEM

The use of coved skirtings around food factory floors is standard practice when using a tanked resin system to enhance the washing down of areas for maximum hygienic standards. This enables a smooth transition to be made from floor to wall with a permanent finish that can be cleaned and will not harbor dirt and bacterial growth. FasTop Cove Base resin coving cures to a much harder finish than concrete and provides a smooth finish for a long-term solution that resists hot water and impact. Coving is usually formed with a 1/2 to 1 inch radius thickness on the vertical, typically at 6 inches high (can be lower or higher as required). The coving would usually be fixed at the top of a stainless steel or plastic cap strip that is pre-installed to the wall/substrate.

In food factories, where maximum impact can occur against coving with pallet trucks and fork lift traffic, a concrete curb can be installed to withstand damage. FasTop Cove Base coving can be applied up and over this curb to complete the resin floor finish with integrated skirtings and upstands, creating a seamless hygienic area.

- ④ **Cap strip:**
Brushed steel/plastic
- ③ **Coving material:**
FasTop Cove
- ② **Screed:**
FasTop Multi System
- ① **Primer:**
FasTop Primer



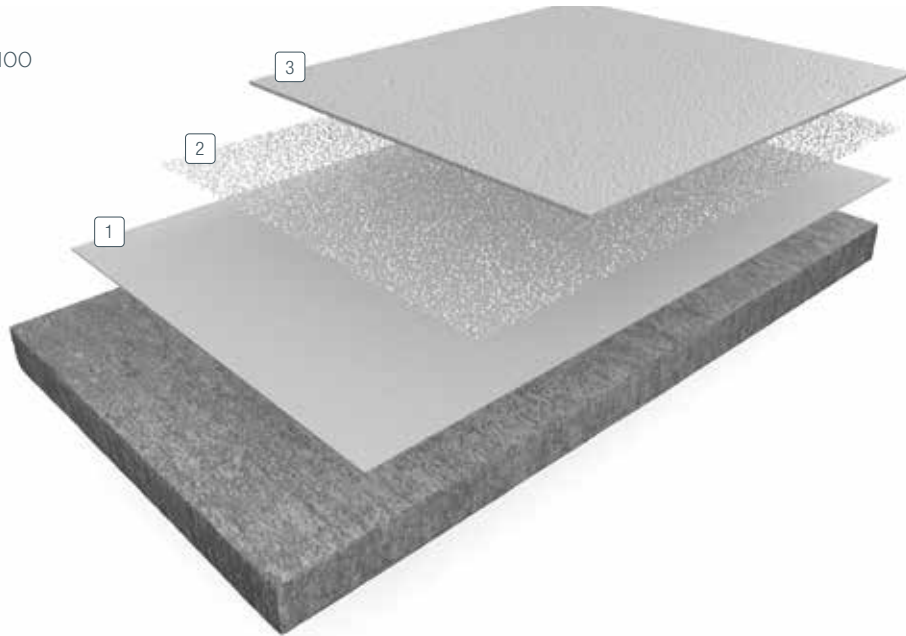
BENEFITS

- Suitable for forming radius coves
- Seamless finish
- High chemical resistance
- Resistant to hot water and steam
- Matte finish
- Extremely hard wearing.

FASTOP™ MULTI TOPCOAT T100

FasTop Multi Topcoat T100 can be installed as a high-performance urethane concrete topcoat or as a single broadcast floor system. It incorporates a broadcast of aggregate into the first coat followed by a seal coat. It exhibits good chemical and temperature resistance, and can be used in conjunction with FasTop Multi Systems as a urethane concrete topcoat. It is available in 10 standard colors.

- ③ **Slurry:**
FasTop Multi Topcoat T100
- ② **Aggregate:**
Broadcast silica
- ① **Slurry:**
FasTop Multi System



BENEFITS

- Seamless, cleanable surface
- Durable, wear and slip resistant
- Chemical and stain resistant

FASTOP MULTI SYSTEMS INNOVATIVE PACKAGING

To give you greater efficiencies in your shipping and storage operations, FasTop Multi System provides streamlined packaging and advanced application characteristics.

Packaged as a 4-component system, featuring a universal base and hardener, with aggregate filler and color pack added separately.



Universal base
and hardener



Aggregate



Color pack

FASTOP MULTI SYSTEMS

POLYURETHANE HYGIENIC FLOORING

THE SHERWIN-WILLIAMS DIFFERENCE

Sherwin-Williams High Performance Flooring delivers unique, sustainable flooring solutions to help your facilities maintain the highest level of performance from the ground up. Our extensive portfolio of flooring, structural steel and passive fire protection coatings for high-value infrastructure helps customers protect lives, enhance safety, safeguard assets and create a lasting aesthetic legacy. From sports arenas to convention centers, airports and healthcare facilities, Sherwin-Williams brings exceptional industry, product and technical expertise to ensure successful project outcomes.



Unparalleled
distribution network



Global
industry expertise



Most extensive sales
organization coverage



Unmatched technical
and specification service

United States & Canada

sherwin-williams.com/protective
swflooding@sherwin.com

SHERWIN-WILLIAMS®

© 2020 The Sherwin-Williams Company
PM-218905-01-BR 6/20